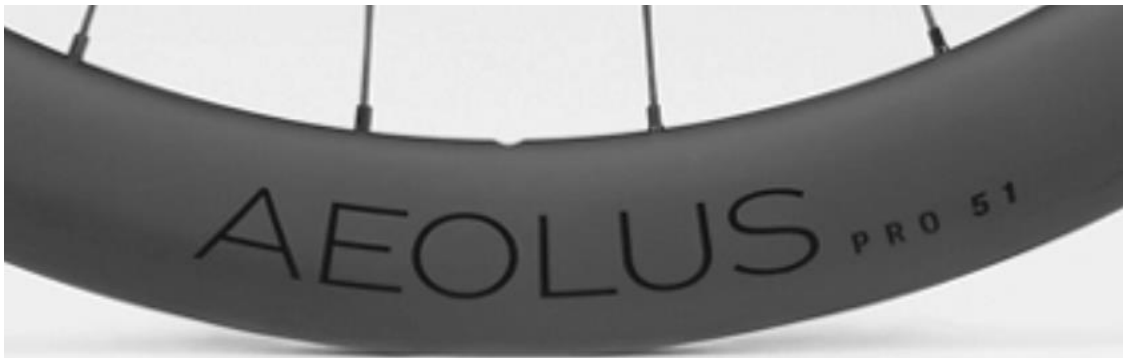


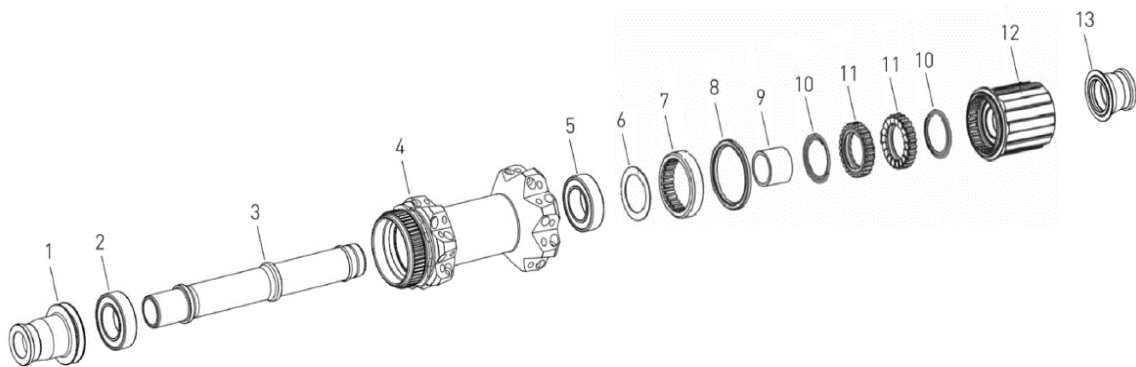


Aeolus Pro 51 Disc TLR Clincher Rear Wheel



Wheel Components

| TCG Part Number | Description |
|-------------------|---|
| 5254718 / 5254720 | Wheel - 142mm OLD |
| NA | Hub (OE use only, not available for aftermarket purchase) |
| NA | Rim |
| W558559 | Drive Side Spokes |
| W315215 | Non-Drive Side Spokes |
| W593860 | Nipples |
| W5252902 | Tubeless Rim Strip |
| W557652 | Tubeless Valve Stem |



Hub Service Parts

| Diagram Number | TCG Part Number | Description |
|----------------|-----------------|---|
| 1 | 1046262 | Axle End Cap Non-Drive Side |
| 2 | 413573 | Ball Bearing 6902 15x28x7mm (Steel, stock) |
| 2 | 413574 | Ball Bearing 6902 15x28x7mm (Ceramic, upgrade option) |
| 3 | 1046261 | Axle |
| 4 | NA | Hub Shell |
| 5 | 413573 | Ball Bearing 6902 15x28x7mm (Steel, stock) |
| 5 | 413574 | Ball Bearing 6902 15x28x7mm (Ceramic, upgrade option) |
| 6 | 406899 | Shim Ring |
| 7 | 406900 | Ring Nut |
| 8 | W211591 | Seal Hub Shell/Rotor |
| 9 | W276495 | Spacer |
| 10 | 406901 | Spring |
| 11 | 515907 | Star Ratchet 36T Upgrade (wheels ship with 18T star ratchets) |
| 12 | W431448 | Freehub aluminum, Shimano 9/10/11-Speed compatible (Includes 5mm drive side endcap) |
| Not Pictured | W580844 | Freehub, XDR w/12mm end cap |
| 13 | 513112 | Shimano 11-Speed Road End Cap 12mm (this part includes Non-Drive Side End Cap that does not fit this hub) |
| Not Pictured | 1051432 | Bontrager Centerlock Lockring |
| Not Pictured | W329910 | Cassette spacer, required to use 10 speed Shimano cassettes with OE freehub |

Wheel Building Information and Specifications

| Value | Description or Specification |
|---|---|
| Wheel Building Information | |
| 0.4 | Hop (mm) |
| 0.4 | Wobble (mm) |
| 0.6 | Dish (mm) |
| NA | Wheel stress level drive side up (degrees of rotation, measured on Bontrager Stressor) |
| NA | Wheel stress level non-drive side up (degrees of rotation, measured on Bontrager Stressor) |
| 253 lbs min, 340 lbs max OR 114.8 kgf min, 154.2 kgf max | Spoke Tension, Drive Side |
| 115 lbs min OR 52 kgf | Spoke Tension, Non-Drive Side |
| Lacing Pattern Drive Side | 2 cross. Pulling spokes outside. Pushing spokes inside. Spokes woven, pulling spokes on the inside of the second cross. First hole CW from valve hole is a pushing spoke. |
| Lacing Pattern Non-Drive Side | 2 cross. Pulling spokes outside. Pushing spokes inside. Spokes woven, pulling spokes on the inside of the cross. First hole CW from valve hole is a pushing spoke. |
| Additional build instructions | NA |
| Size Specifications | |
| 266mm | Spoke Length Drive |
| 270mm | Spoke Length Non-Drive |
| 543mm | Rim ERD |
| 51mm | Rim height |
| 31mm | Rim outer width |
| 23mm | Rim inner hook bead width |
| NA | Rim spoke offset |
| Other Specifications | |
| g | Wheel weight |
| 505g | Rim weight |
| 270g | Hub weight |
| Carbon/Black | Wheel Color |
| Black | Hub color |
| Black | Spoke color |
| Carbon/Black | Rim color |
| 24 | Spoke Count |
| 14/17G | Spoke Gauge |
| Centerlock | Disc brake interface |
| Yes | Tubeless ready |