

**BONTRAGER****WHEEL SPECIFICATIONS****Aeolus Pro 51 Disc TLR Clincher Front Wheel****Wheel Components**

TCG Part Number	Description
5254717 / 5254719	Wheel -12mm Thru Axle
NA	Hub (OE use only, not available for aftermarket purchase)
NA	Rim
W315215	Drive Side Spokes
W513414	Non-Drive Side Spokes
W593860	Nipples
W5252902	Tubeless Rim Strip
W557652	Tubeless Valve Stem

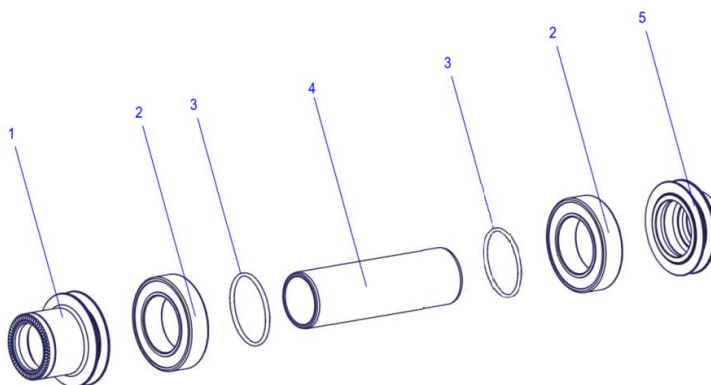
**Hub Service Parts**

Diagram Number	TCG Part Number	Description
1	1045696	Axle End Cap Disc Side (12mm)
2	413573	Ball Bearing 6902 15x28x7mm (Steel, stock)
2	413574	Ball Bearing 6902 15x28x7mm (Ceramic, upgrade option)
3	1045697	Bearing spacer O-ring (2 required)
4	1045694	Bearing spacer
5	1045695	Axle End Cap Non-Disc Side (12mm)
Not Pictured	NA	Hub Shell
Not Pictured	524663	Bontrager Centerlock Lockring for 15mm (not included with aftermarket wheel)
Not Pictured	1051432	Bontrager Centerlock Lockring for 5/12mm (not included with aftermarket wheel)

Wheel Building Information and Specifications

Value	Description or Specification
Wheel Building Information	
0.4	Hop (mm)
0.4	Wobble (mm)
0.6	Dish (mm)
NA	Wheel stress level disc side up (degrees of rotation, measured on Bontrager Stressor)
NA	Wheel stress level non-disc side up (degrees of rotation, measured on Bontrager Stressor)
220 lbs min, 290 lbs max OR 100 kgf min, 132 kgf max	Spoke Tension, Disc Side
115 lbs min OR 52 kgf	Spoke Tension, Non-Disc Side
Lacing Pattern Disc Side	2 cross. Pulling spokes outside. Pushing spokes inside. Spokes woven, pulling spokes on the outside of the cross. First hole CW from valve hole is a pushing spoke.
Lacing Pattern Non-Disc Side	2 cross. Pulling spokes inside. Pushing spokes outside. Spokes woven, pulling spokes on the outside of the cross. First hole CW from valve hole is a pulling spoke.
Additional build instructions	NA
Size Specifications	
270mm	Spoke Length Drive
272mm	Spoke Length Non-Drive
543mm	Rim ERD
51mm	Rim height
31mm	Rim outer width
23mm	Rim inner hook bead width
NA	Rim spoke offset
Other Specifications	
g	Wheel weight
505g	Rim weight
136g	Hub weight
Carbon/Black	Wheel Color
Black	Hub color
Black	Spoke color
Carbon/Black	Rim color
24	Spoke Count
14/17G	Spoke Gauge
Centerlock	Disc brake interface
Yes	Tubeless ready